



Service Kit 753-05851

Date: 3/05/2008

Subject: Service Replacement for the
618-04034 Single Speed Transmission

Models N/A
Affected:

Read through and understand these instructions completely before proceeding with repair.

PURPOSE: This kit is the service replacement for the 618-04034 single speed transmission which is no longer available. This kit includes additional idler/spring replacement hardware (#) that is **specific only** for the 600 series AutoDrive (non-hydrostatic transmission). The additional idler/spring replacement hardware is **not applicable** to the 700 Series (denoted by orange knob on the PTO lever) Shift-On-The-Go (non-hydrostatic transmission) lawn tractors.

NOTE: These materials are prepared for use by trained technicians who are experienced in the service and repair of equipment of the kind described in this publication, and are not intended for use by untrained or inexperienced individuals. Such individuals should seek the assistance of an authorized service technician or dealer.

NOTE: Save this Instruction Sheet. Refer to it when ordering replacement parts.

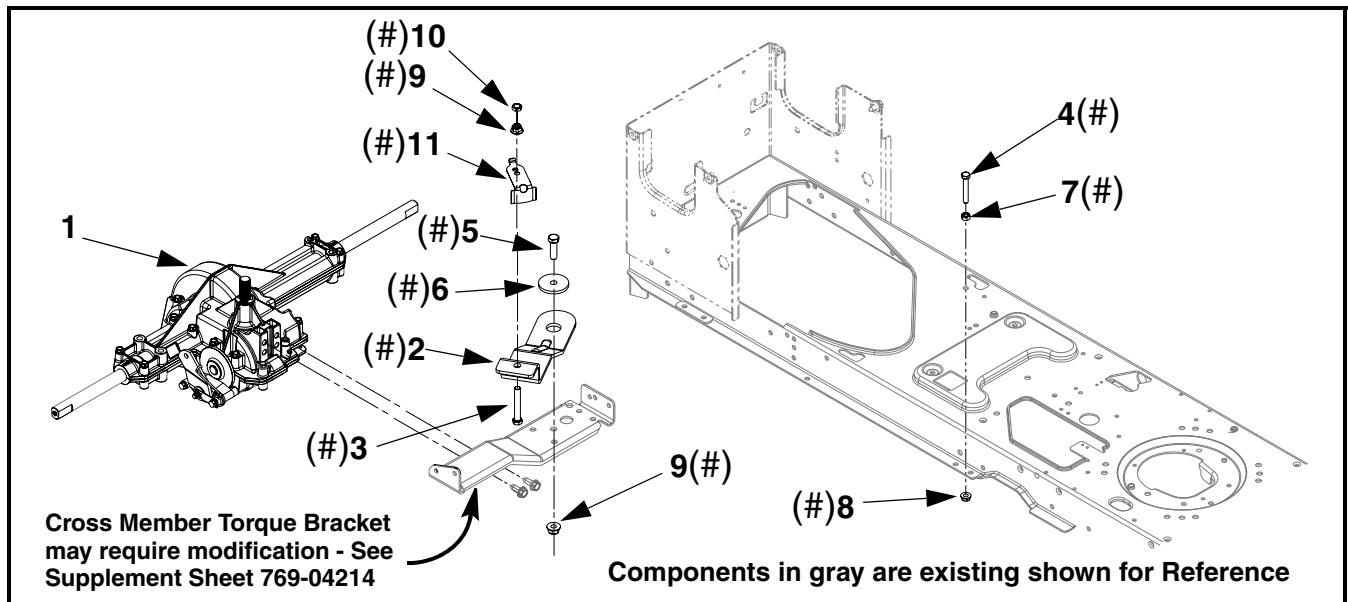


FIGURE 1

Service Kit Contents (See Figure 1)

* - Not Available Separately

- Denotes service kit parts required ONLY for the 600 Series AutoDrive (non-hydrostatic transmission) Lawn Tractors

ITEM NO.	PART NUMBER	QTY	DESCRIPTION
1	618-04566	1	TRANSMISSION: SGL SPEED: DOMESTIC
2	783-05904(#)	1	BRACKET: IDLER: SGL SPEED
3	710-04467(#)	1	HHCS: 3/8"-16 x 2.50" LG: GR5: SPEC
4	710-3103 (#)	1	HHCS: 5/16"-18 x 2.00" LG: GR5: STD
5	710-3005 (#)	1	HHCS: 3/8"-16 x 1.25" LG: GR5: STD
6	738-04162A (#)	1	SPACER: SHOULDER: .884" x .190"
7	712-3010 (#)	1	NUT: HEX: 5/16"-18: GR5
8	712-04063 (#)	1	NUT: FLANGE LOCK: 5/16"-18:GRF: NYLON
9	712-04065 (#)	2	NUT: FLANGE LOCK: 3/8"-16: GRF: NYLON
10	712-0181 (#)	1	NUT: JAM LOCK: 3/8-16: GR5
11	732-1013A	1	KEEPER: BELT
12	769-04214 *	1	SHEET: TORQUE BRACKET REWORK
13	*	1	THIS INSTRUCTION SHEET

Pre-Service Preparation:

1. Place tractor on a flat and level surface, turn off the engine, remove the ignition key and set the parking break "ON".
2. Block both front wheels so the tractor cannot roll forward or backward.
3. Disconnect the black cable from the NEGATIVE battery terminal first, then disconnect the red cable from the POSITIVE battery terminal.
4. Remove the battery and battery tray from the tractor.
5. Raise the rear of the tractor so that the rear wheels are off the ground. Place a pair of jack stands, one on each rear corner of the tractor frame.
6. Release the parking brake.

Transmission Replacement:

NOTE: This section does not provide detailed transmission replacement instructions. This section only provides certain information that is critical to the installation of the new transmission.

7. Ensure that the transmission pulley's star center is properly mated onto the pulley hub.
8. The transmission pulley nut, 712-0700, must be torqued to 300-400 In-Lbs.
9. Ensure that the upper transmission drive belt is installed onto the transmission pulley before the transmission/pulley assembly is positioned into the frame. The belt cannot be installed after the transmission/pulley assembly is installed due to right side wall clearance.

10. Torque the two (2) torque bracket, 683-04287, screws, 710-1260A, to 175-250 In-Lbs.

11. Using a lithium base grease, lubricate a 5" length on both transmission output shafts prior to wheel installation.

NOTE: The following **Idler Replacement and Spring Mount Relocation** installation instructions are specific for 2007 Model Year and earlier - 600 Series AutoDrive Lawn Tractors only.

12. Inspect the existing idler bracket configuration. Referring to Figure 2, if the existing idler bracket is similar to that shown in the **Existing Idler Configuration**, proceed to Step 13.

If the existing idler bracket configuration is similar to that shown in the **New Idler Configuration**, the idler bracket and spring mount have already been installed. STOP HERE.

13. Refer to the Operator's Manual for cutting deck removal and remove the cutting deck from under the tractor.

14. Refer to Figure 2. Following the instructions within Figure 2, re-configure the upper transmission drive belt idler assembly as shown by the New Idler Configuration using the new hardware supplied and that retained as instructed.

NOTE: Ensure that the upper transmission drive belt is installed around the idler pulley before mounting the belt keeper. DO NOT install the idler's tension spring at this time.

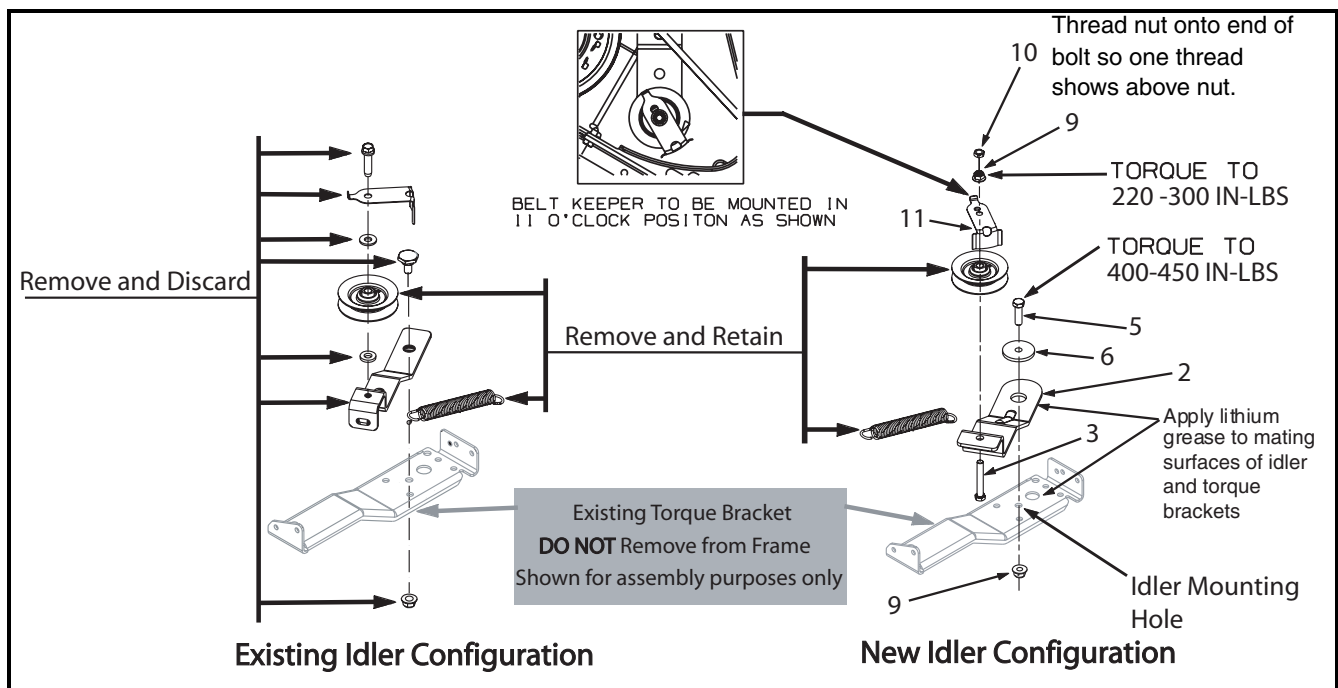


FIGURE 2

Spring Mount Relocation:

15. From the under side of the frame, on the left side of the tractor, remove the hairpin clip and clevis pin connecting the deck lift cable to the deck lift arm.

16. Carefully pull the deck lift cable back up through the frame's "L" shaped cutout.

17. Cut out the template in Figure 4.

18. On the left underside of the frame, position the template as instructed on the template. Tape template in place.

19. Using a 1/8" diameter drill bit and portable drill motor, drill a pilot hole at the center of the indicated circle on the template.

20. Using an 11/32" drill bit, enlarge the pilot hole to 11/32" diameter. Using a larger diameter drill, manually remove any metal burrs from around the hole.

21. Thread the 5/16"-18 Hex Nut (Item 7) onto the 5/16"-18 x 2.0 Bolt (Item 4) so that there is approximately 5/8"- 3/4" of thread showing from the threaded end of the bolt.

22. From the top of the frame, see Figure 1, install the 5/16"-18 x 2.0 bolt /nut assembly into the new hole drilled in Step 14 and secure with a 3/8"-16 Flange Lock Nut (Item 9).

23. Route the deck lift cable back down through the frame and reconnect to the deck lift arm with the hardware removed in Step 9. Ensure the cable is not pinched by the roller pulley and pulley bracket.

24. Install the idler extension spring, saved in Step 8, as shown in Figure 3.

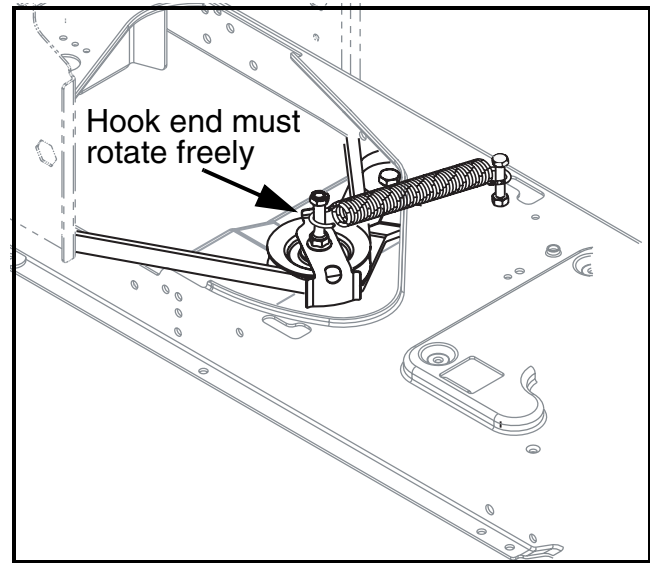


FIGURE 3

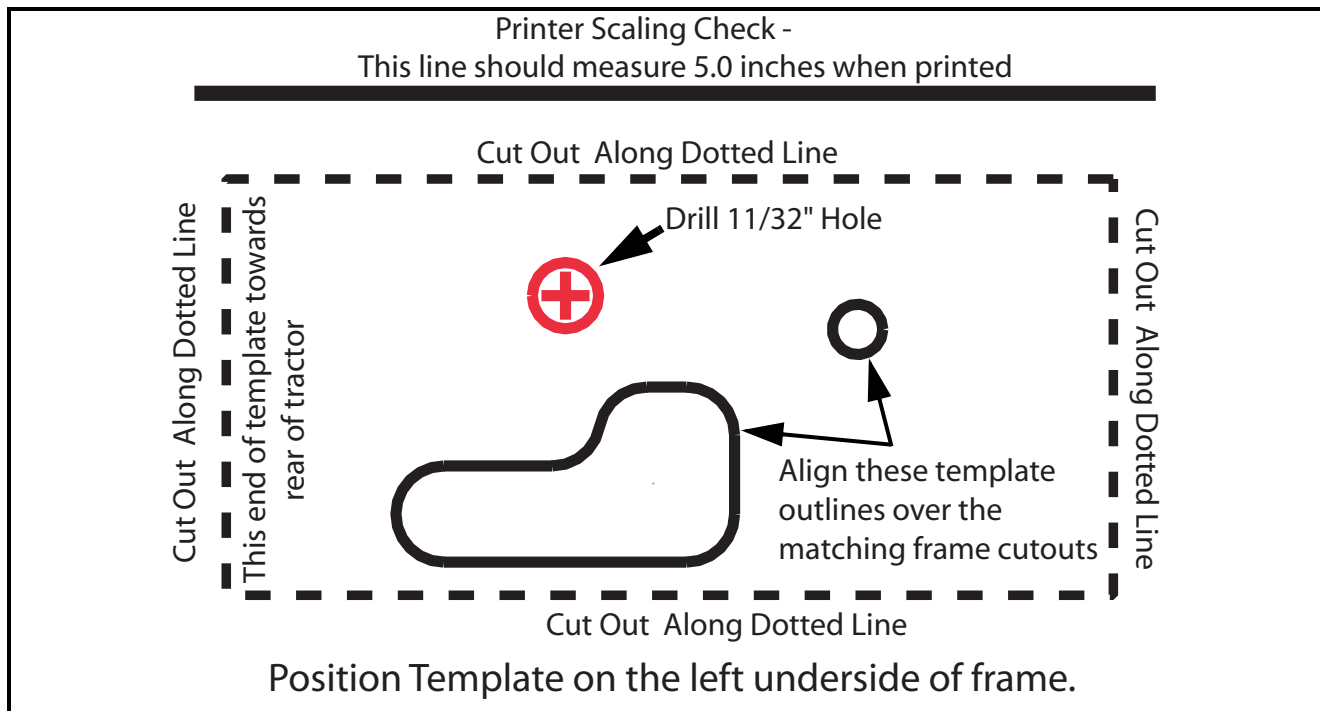


FIGURE 4



Supplement Sheet

Date: 7/15/2008

Subject: Torque Bracket Rework

Models Affected: See below - "Is my unit applicable to this rework?"

PURPOSE: This supplement sheet provides the rework instructions, if required see below, for the side-to-side cross member torque bracket when replacing the **618-04034** transmission with the service replacement **618-04566** supplied in the **753-05851** service kit. No rework of the torque bracket is required if the torque bracket is of the cantilever style (see Figure 2).

The configuration of the upper housing of the new 618-04566 transmission (See Figure 1) will interfere with the cross member torque bracket at two points. This results in the transmission not seating onto the frame at its mounting points.

Is my unit applicable to this rework?:

There are three (3) criteria that determines if your lawn tractor will require the torque bracket rework...

1. Lawn tractor is a 600 Series AutoDrive, Transmatic or Shift-On-the-Go (non-hydrostatic transmissions) model
2. The existing transmission, being replaced, is a single speed 618-04034. See area of concern in Figure 1.
3. The existing torque bracket is a full side-to-side cross member style as shown in Figure 2.

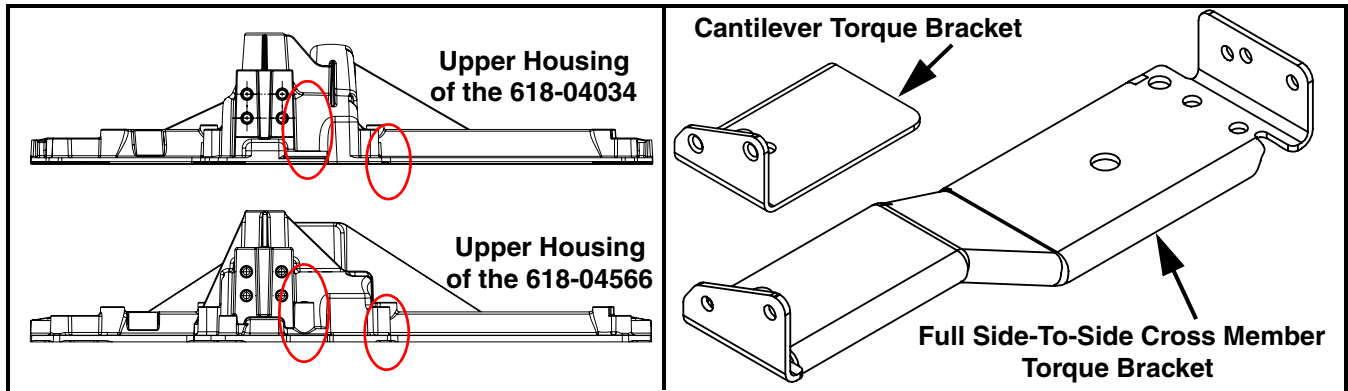


FIGURE 1

FIGURE 2

Rework Instructions:

1. With the transmission removed from the lawn tractor, mark the cross member as shown in red in Figure 3.

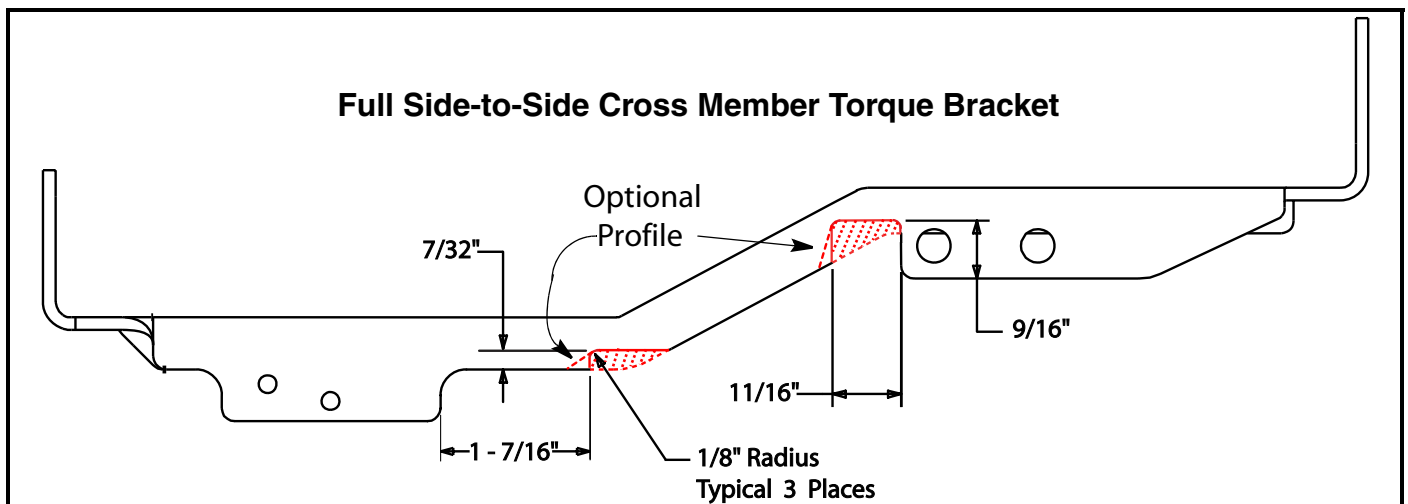


FIGURE 3

2. Using a 4-1/2" hand held angle grinder with a 4" abrasive cutoff disk, remove the torque bracket material shown in red in Figure 3. Remove the material slowly so as not to over heat the part.
3. Remove any burrs or sharp edges with a file. Use a primer/sealer to cover the exposed metal.

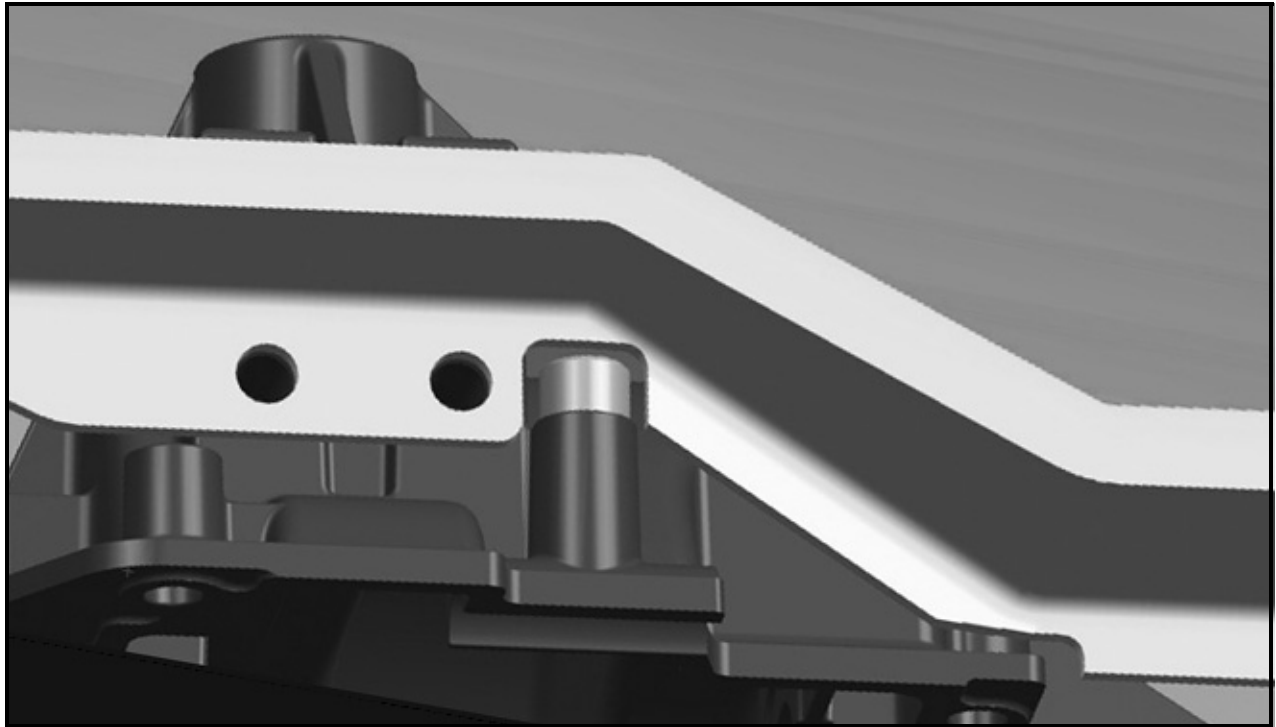


FIGURE 4

4. Proceed with the installation of the new transmission in accordance with the 753-05851 service kit instructions.